



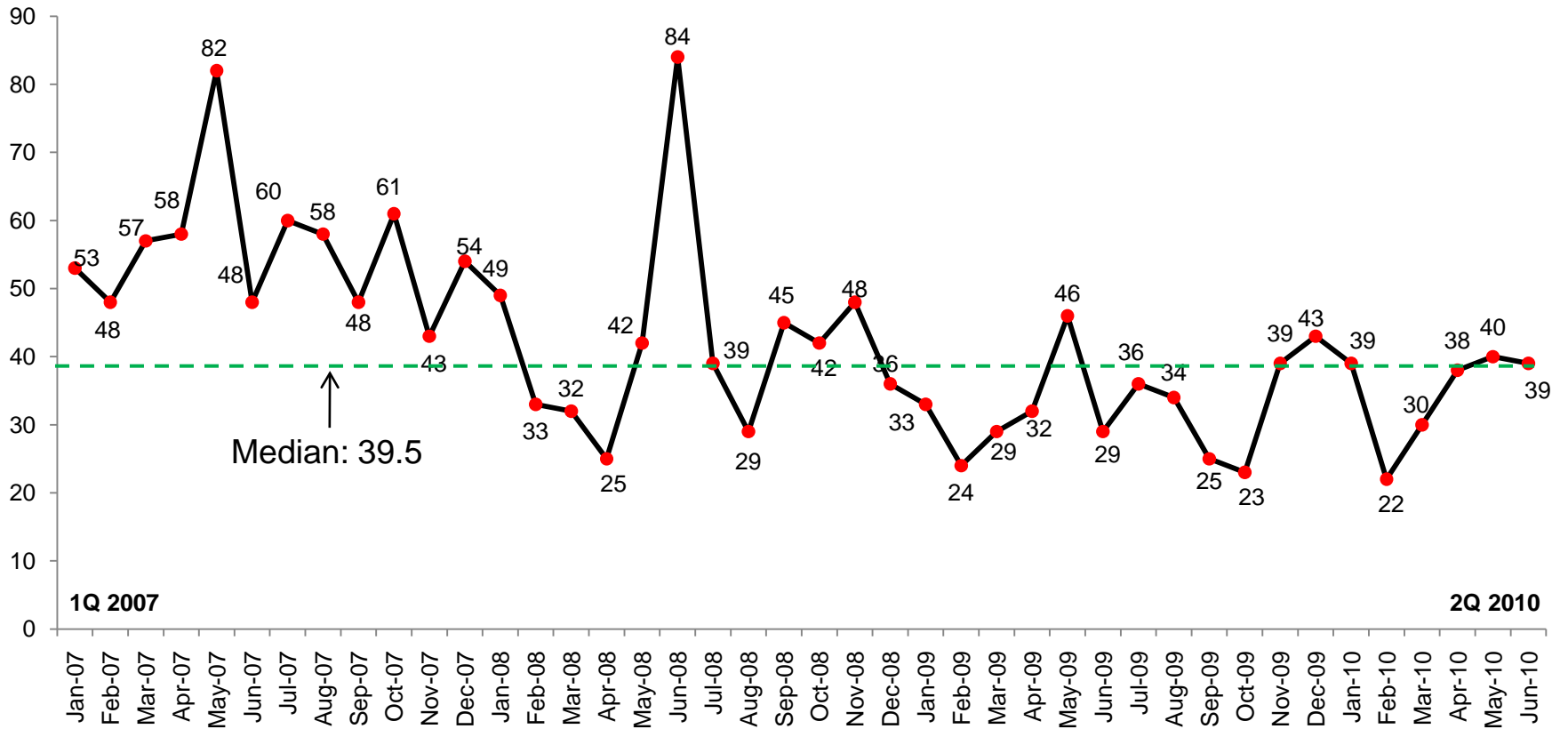
Near Southside Crime Report Supplement
Trend Analysis

First Half 2010

Fort Worth South, Inc.

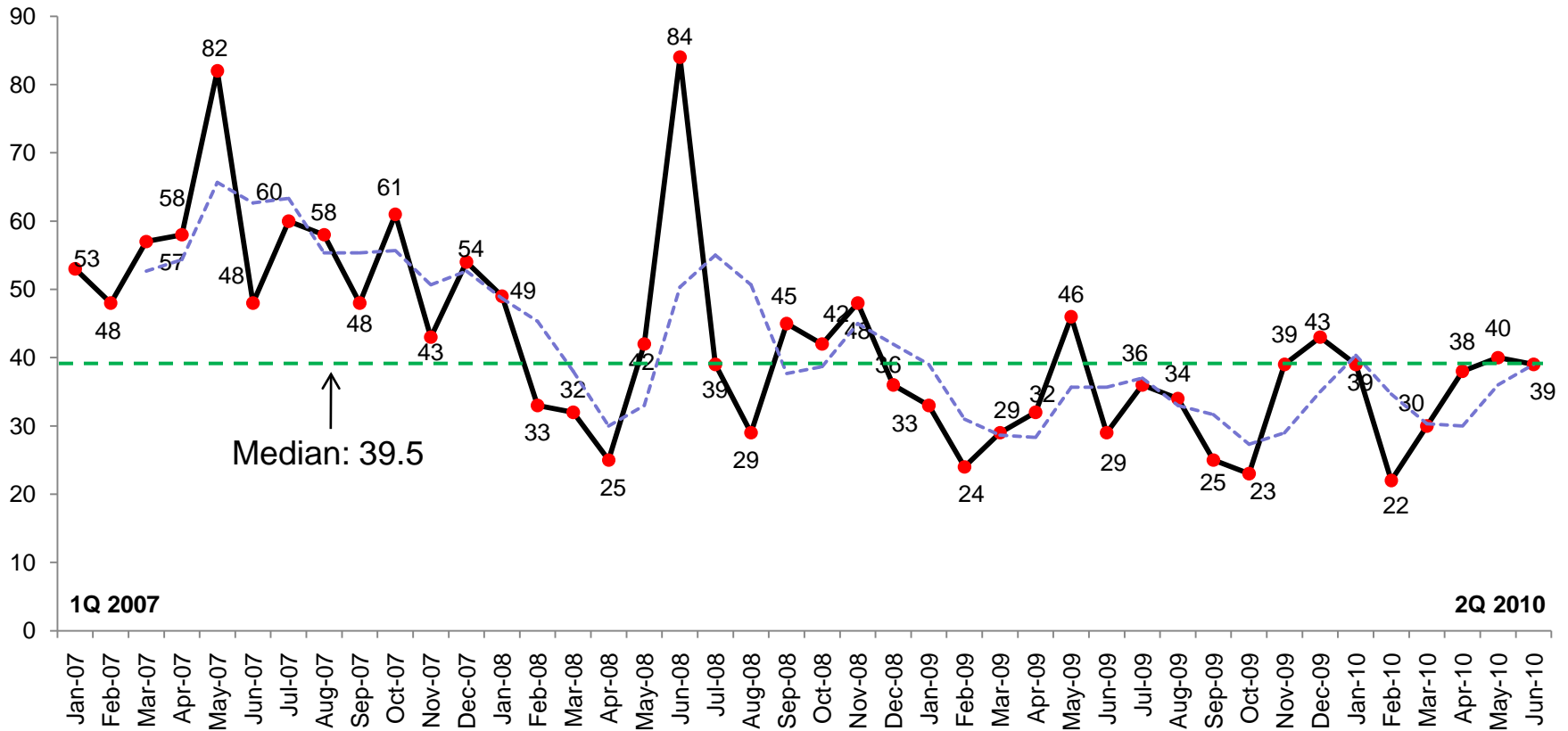
July 9, 2010

Part 1 Crimes by Month Near Southside



Part 1 Crimes by Month Near Southside

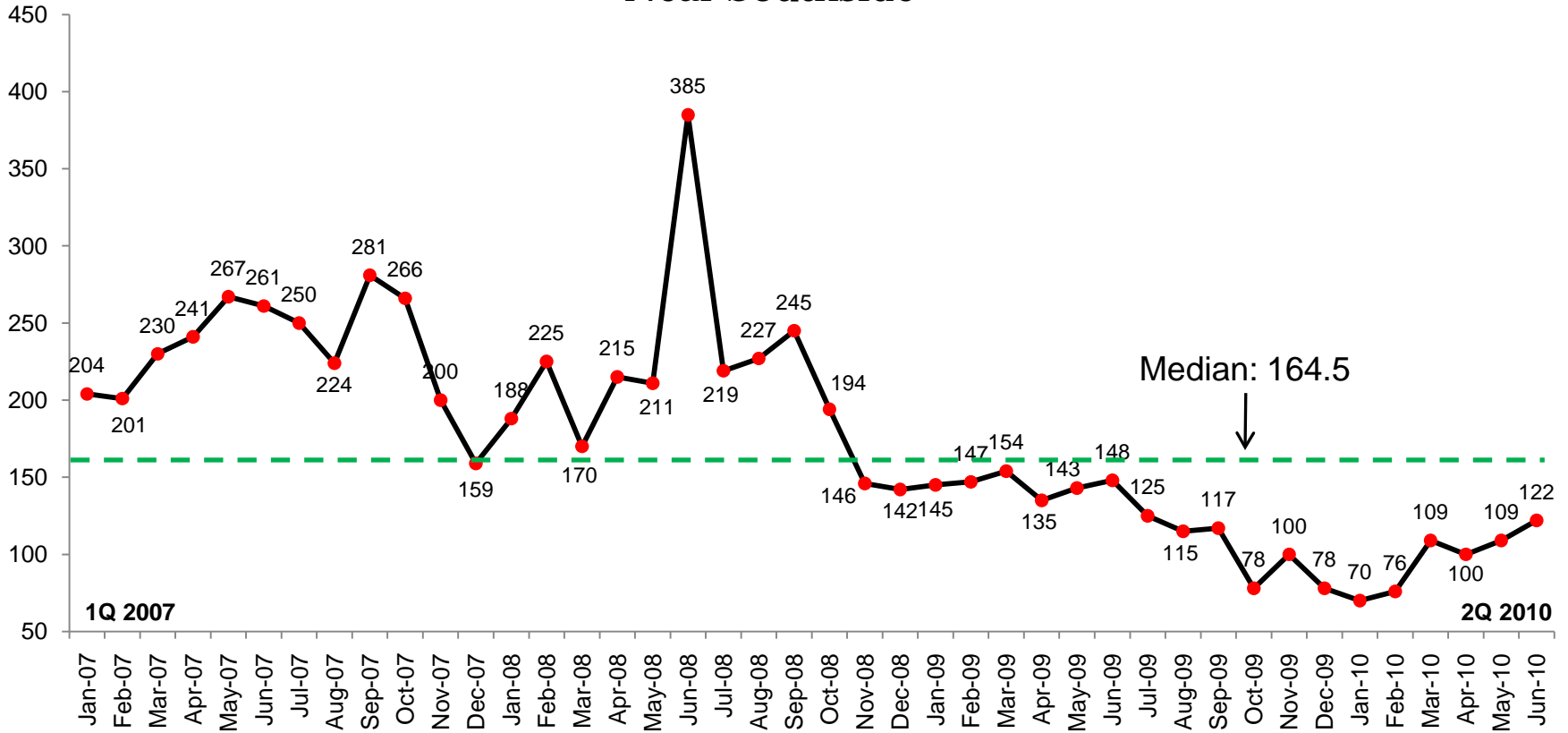
Trendline: Three months moving average



Two major peaks in Part 1 crimes were observed: May 2007 and June 2008. Since June 2008, Part 1 crimes show a general downward trend. Eleven months out of the last 12, reported cases of Part 1 crimes was below the long range median of 39.5. The three months moving average shows a slight upward trend that started in April 2010.

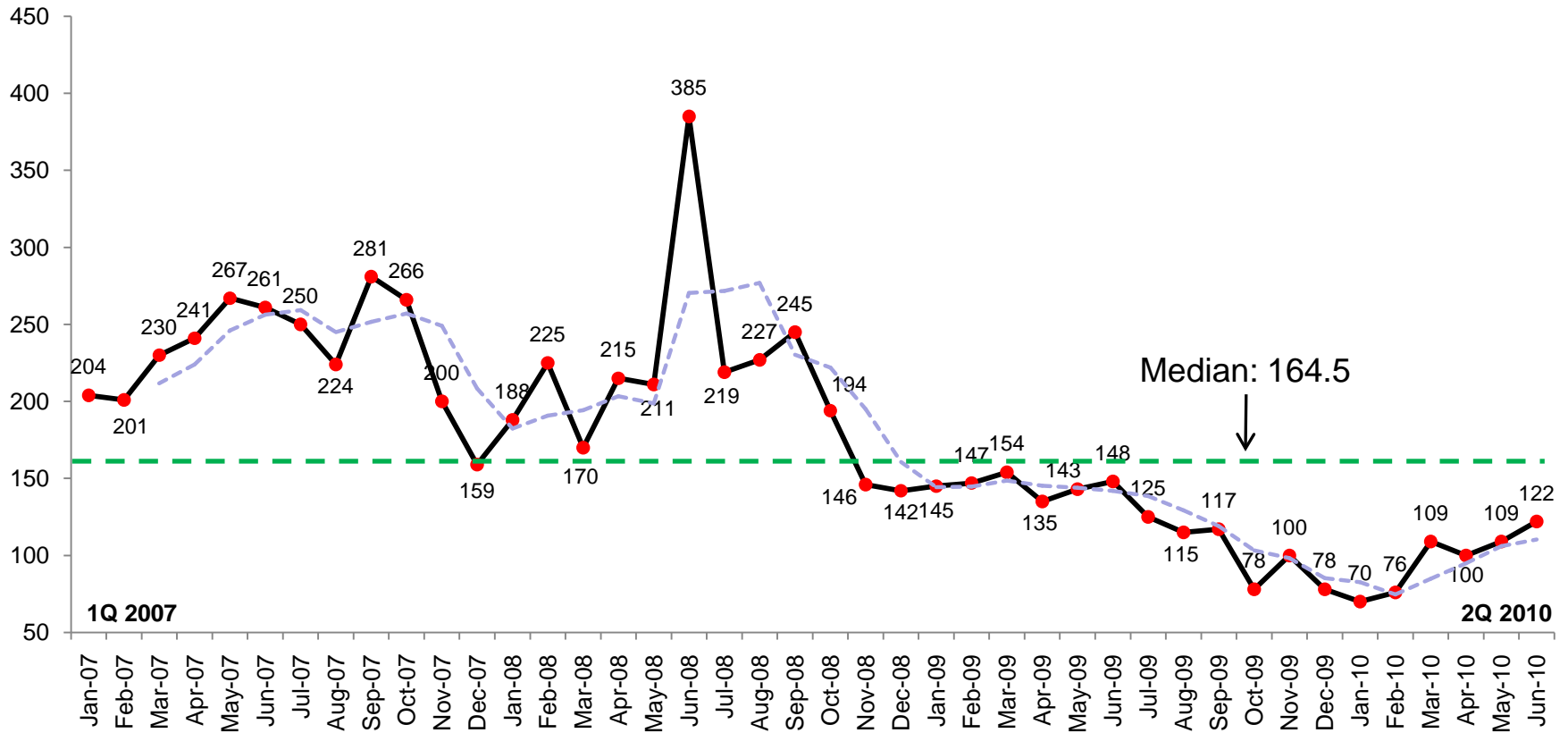


Part 2 Crimes by Month Near Southside



Part 2 Crimes by Month Near Southside

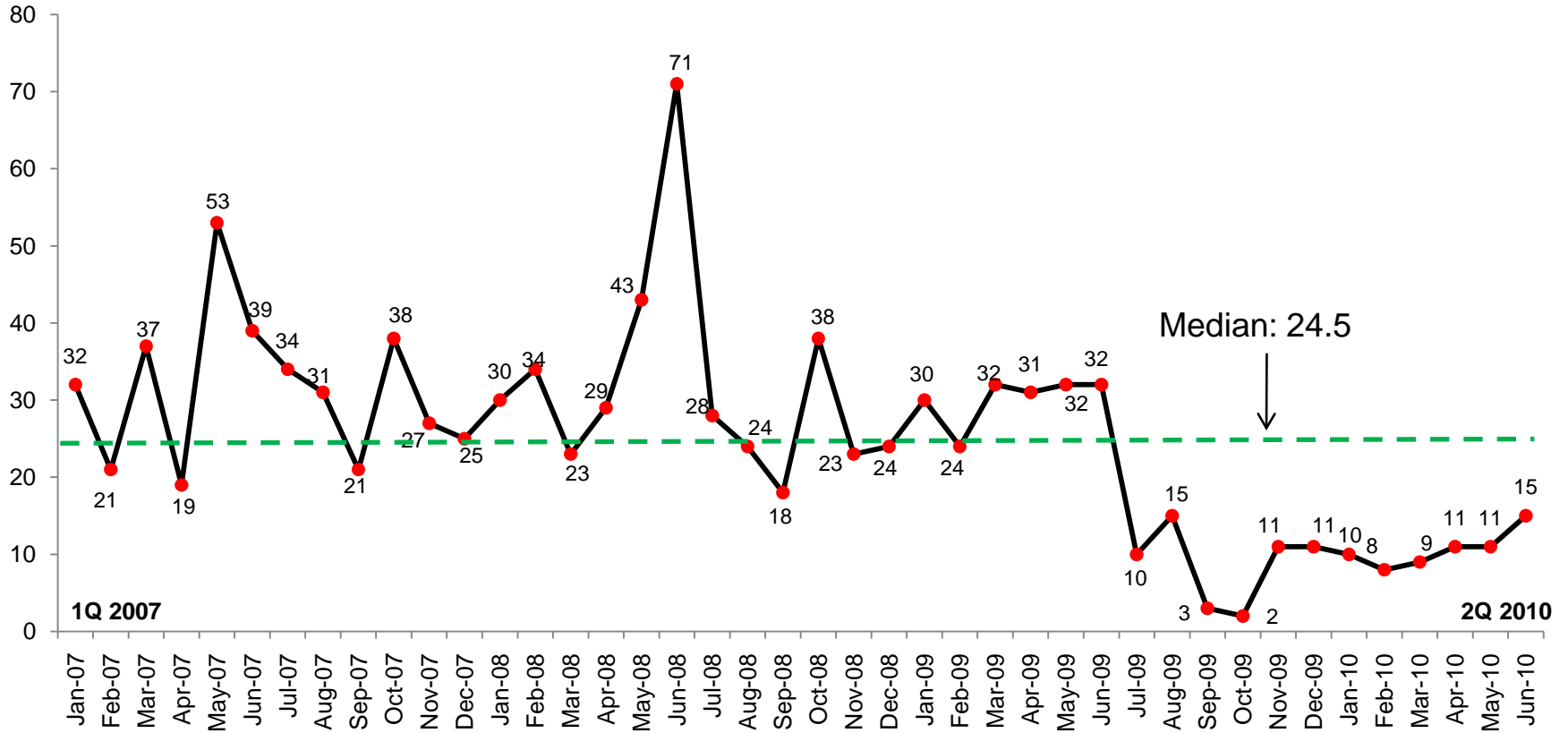
Trendline: Three months moving average



Reported cases of Part 2 crimes peaked in June 2008 at 385. A significant downward trend began in September 2008. The downward trend has continued through February 2010. Reported cases of Part 2 crimes were below the long range median (164.5 per month) for the last 20 months. Current three month moving average shows a moderate upward trend that started in February 2010.

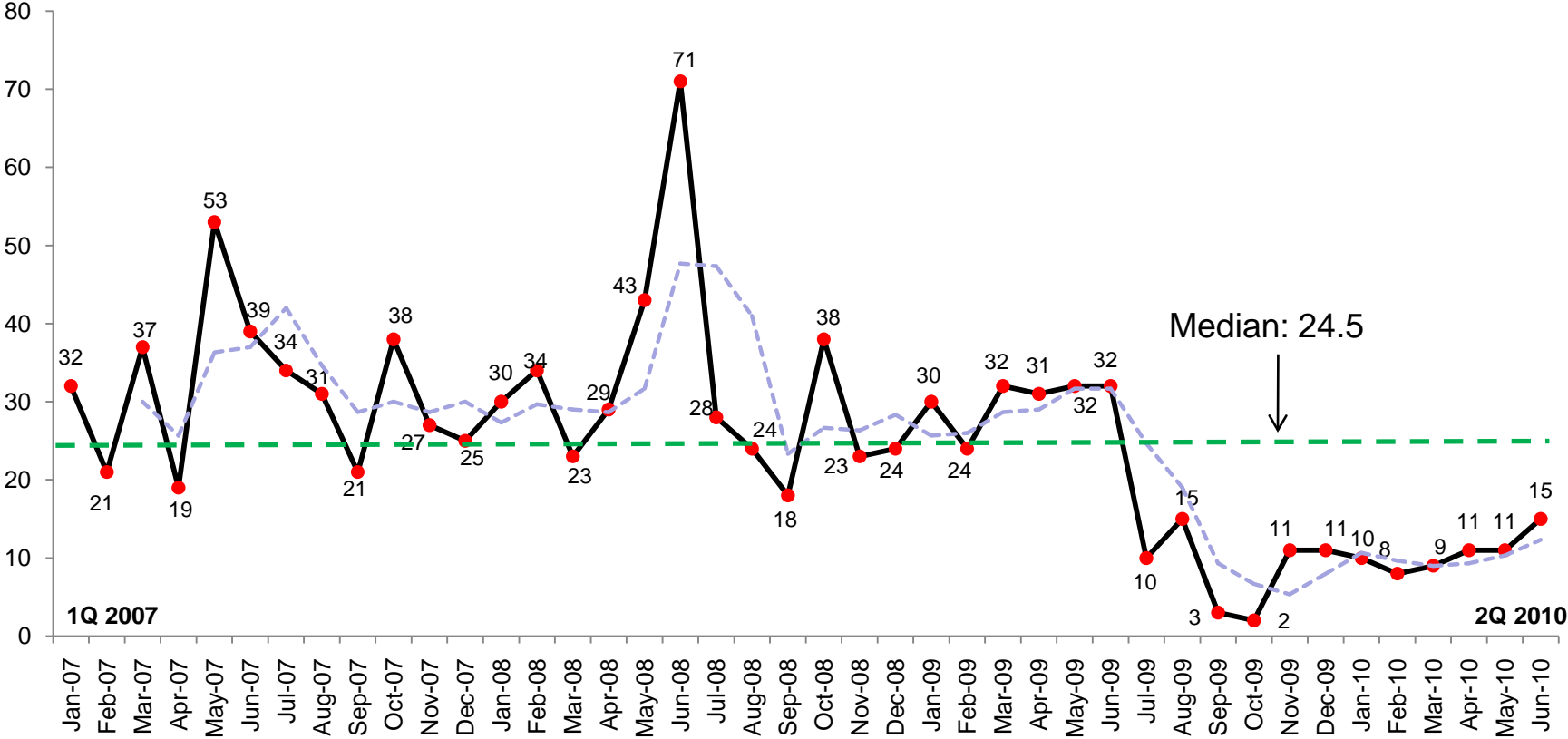


Crimes Against Person By Month Near Southside



Crimes Against Person By Month Near Southside

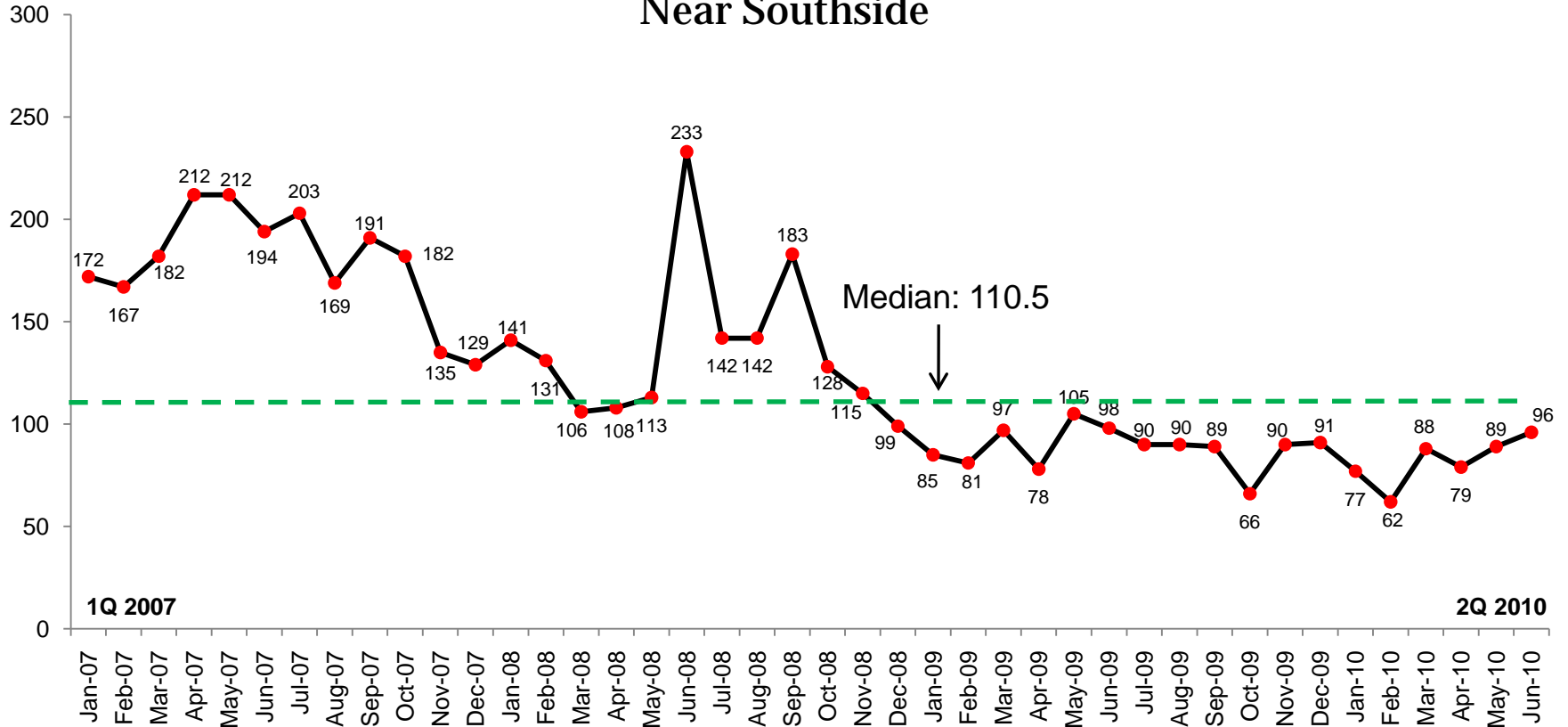
Trendline: Three months moving average



Crimes against person peaked at 71 reported cases in June 2008. In July 2008, it declined to 28 and has remained below the long range median of 24.5 for the last 12 months. The least number of crimes against person was reported in September 2009. Current three months moving average show a flat trend.

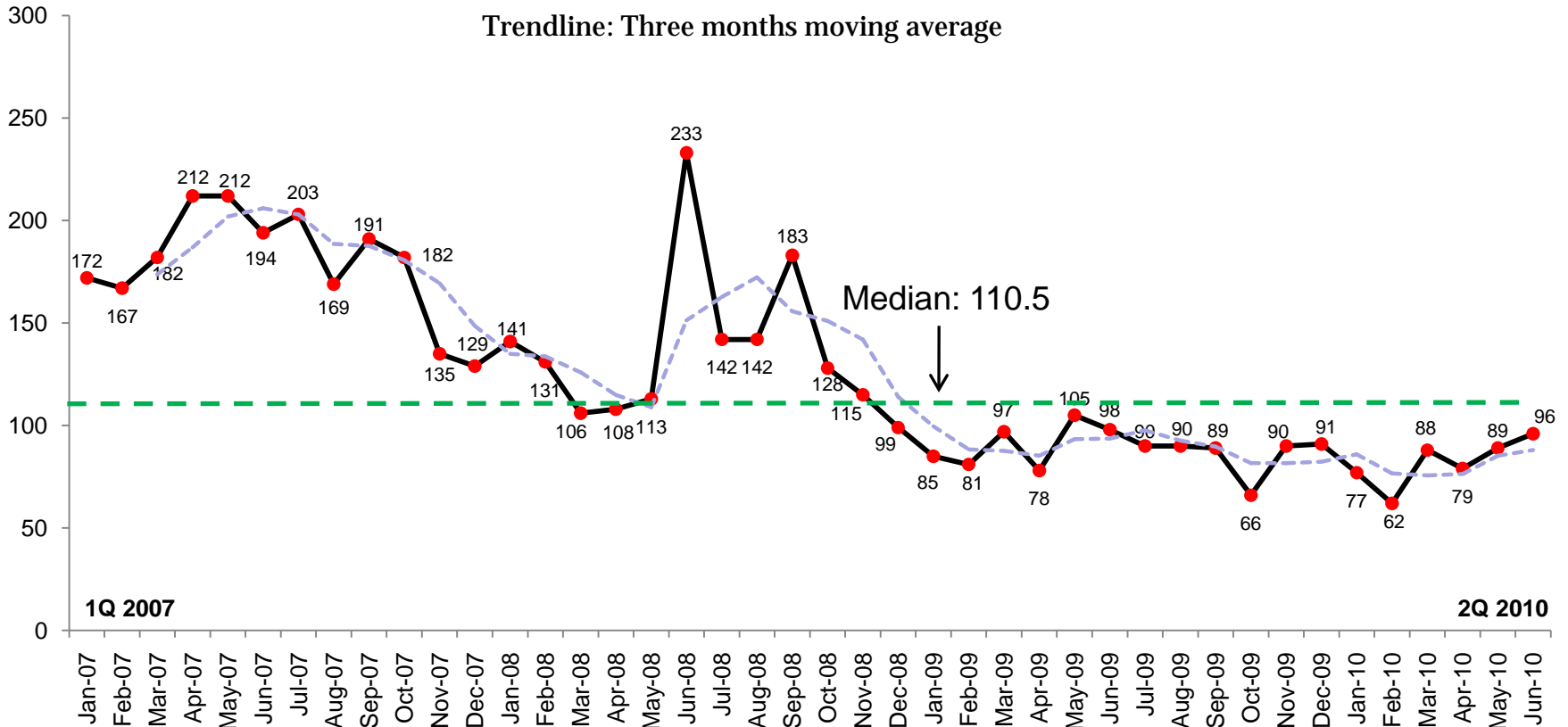


Crimes Against Property By Month Near Southside



Crimes Against Property By Month Near Southside

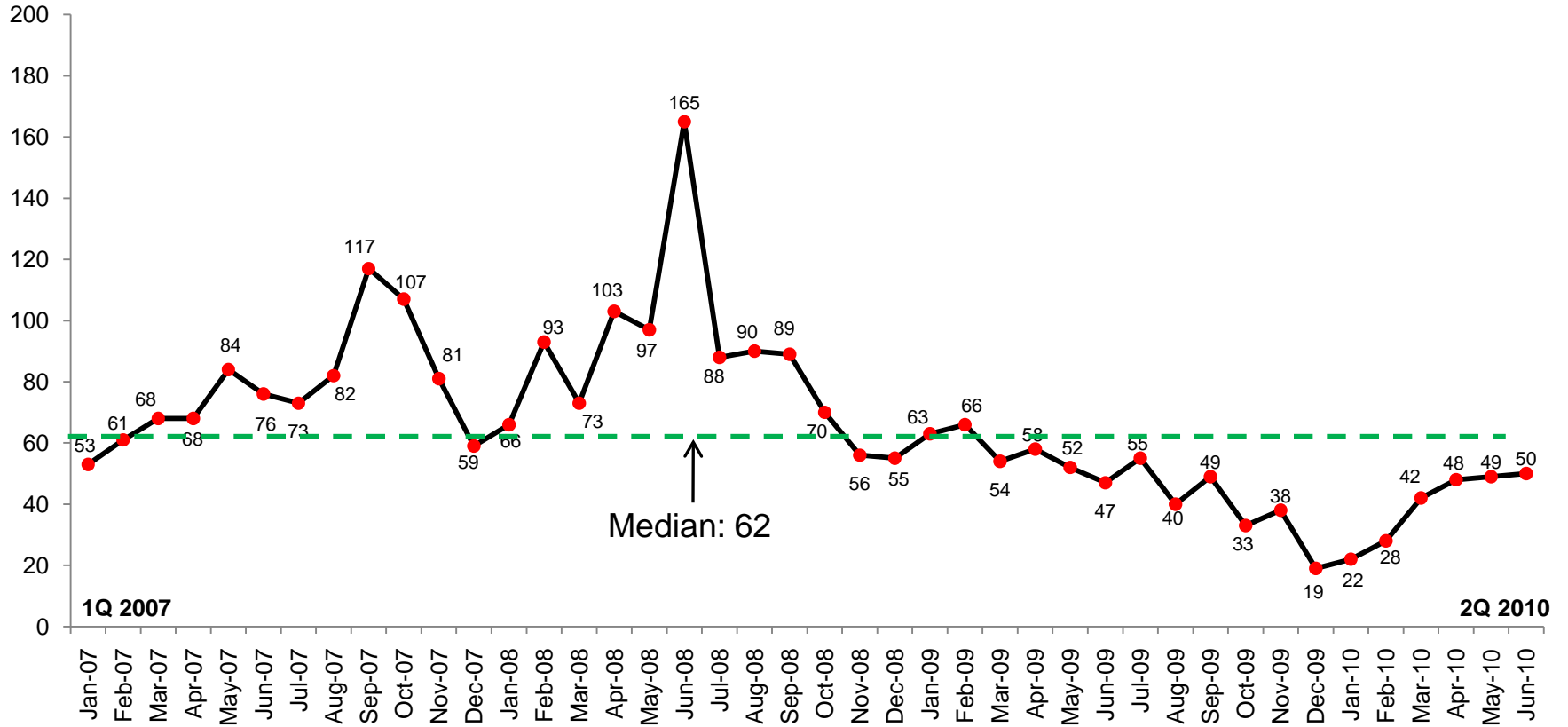
Trendline: Three months moving average



Crimes against property peaked in June 2008 at 233. It has been below the long term median since December 2008. Current three months moving average shows a flat trend.

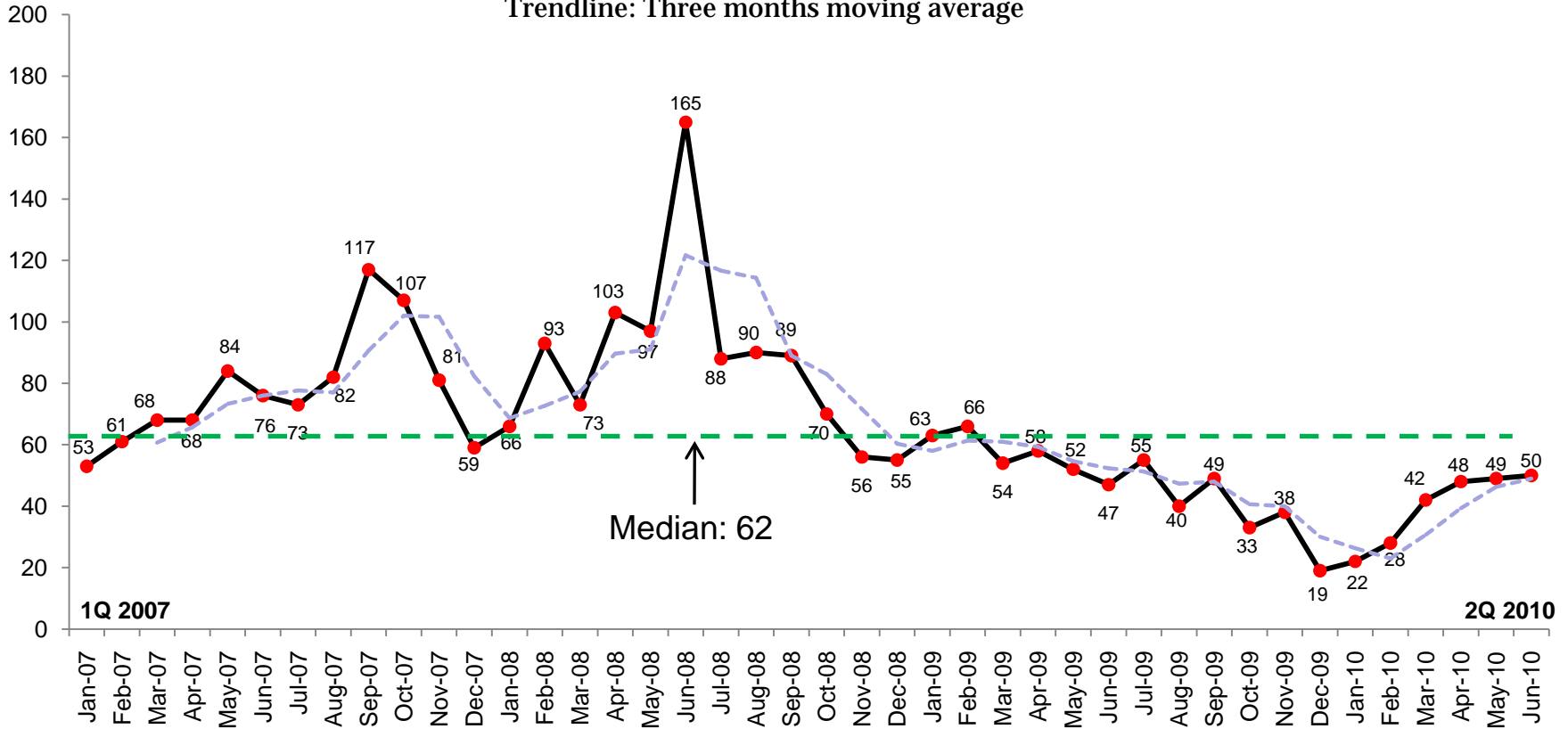


Crimes Against Society By Month Near Southside



Crimes Against Society By Month Near Southside

Trendline: Three months moving average



Crimes against society peaked in June 2008 at 165. It has been below the long term median (62) since March 2009. Current three months moving average shows a modest upward trend that began in February 2010.

